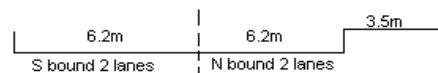
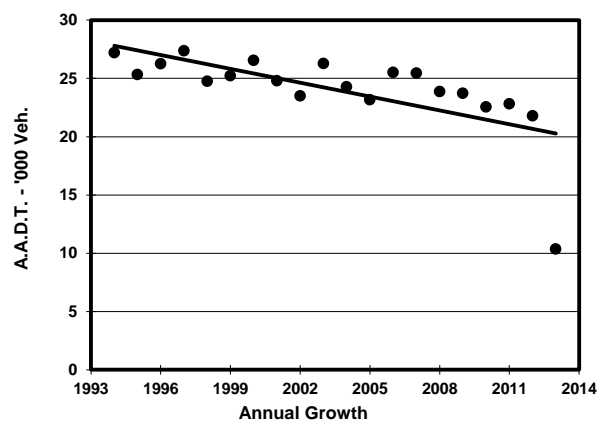
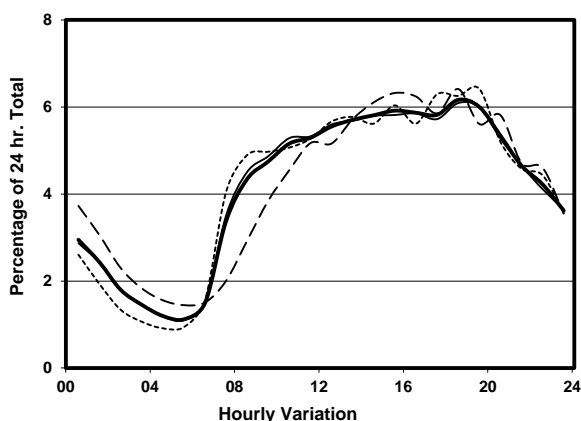
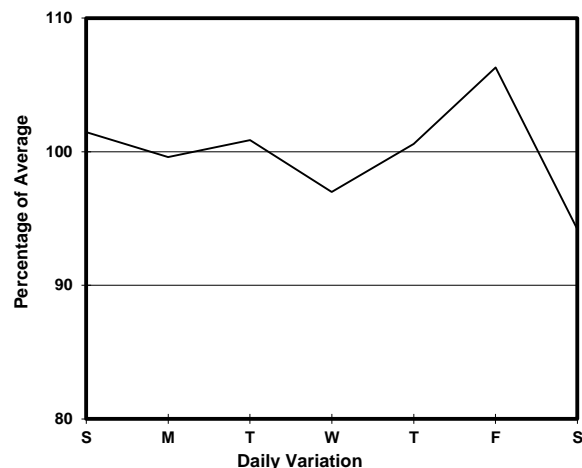
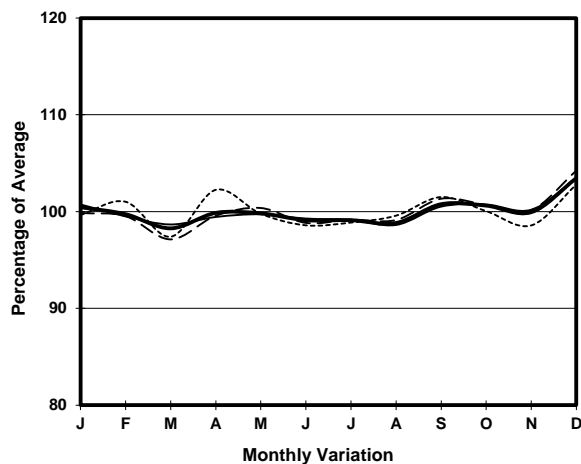


YEAR 2013
 COVERAGE (B) STATION 4215
 ROAD NETWORK MAJOR
 ROAD TYPE DISTRICT DISTRIBUTOR

LINK YIM PO FONG ST (from SHANTUNG ST to WATERLOO RD)



1. TRAFFIC FLOW VARIATION AND GROWTH



2. TRAFFIC CHARACTERISTICS (BY DIRECTION)

| Parameter | All - Day | Mon. - Fri. | Sat. | Sun. |
|--------------------------------------|-----------|-------------|-----------|-----------|
| SOUTH BOUND | | | | |
| A.A.D.T. | 5320 | 5350 | 5050 | 5400 |
| R 12 / 24 - % | 63.3 | 63.7 | 58.9 | 65.6 |
| R 16 / 24 - % | 83.4 | 83.7 | 79.5 | 85.7 |
| AM Peak Hour | 0900-1000 | 0900-1000 | 0900-1000 | 0800-0900 |
| One-way flow at AM peak hour | 240 | 250 | 190 | 250 |
| T - % (AM) | - | 4.8 | - | - |
| PM Peak Hour | 1800-1900 | 1800-1900 | 1800-1900 | 1800-1900 |
| One-way flow at PM peak hour | 320 | 310 | 320 | 340 |
| T - % (PM) | - | 1.8 | - | - |
| Prop.of commercial vehicles - 16 hr. | - | 4.1 | - | - |
| NORTH BOUND | | | | |
| A.A.D.T. | 5040 | 5100 | 4700 | 5120 |
| R 12 / 24 - % | 64.3 | 64.5 | 61.9 | 65.4 |
| R 16 / 24 - % | 84.6 | 84.5 | 82.8 | 86.6 |
| AM Peak Hour | 0900-1000 | 0900-1000 | 0900-1000 | 0900-1000 |
| One-way flow at AM peak hour | 250 | 260 | 190 | 280 |
| T - % (AM) | - | 4 | - | - |
| PM Peak Hour | 1800-1900 | 1800-1900 | 1800-1900 | 1700-1800 |
| One-way flow at PM peak hour | 320 | 320 | 310 | 340 |
| T - % (PM) | - | 4.5 | - | - |
| Prop.of commercial vehicles - 16 hr. | - | 3.5 | - | - |

3. OTHER INFORMATION AND COMMENT

4. Vehicle classification and occupancy - Monday to Friday

| Time | | Class of vehicle | | | | | | | | | |
|------------------------|-----|------------------|----------------|------|---------------|------|------------|-------|----------------|---------|------|
| | | Motor Cycle | Private Car | Taxi | Private LB | PLB | Goods veh. | | Non Fr. Bus | Fr. Bus | |
| | | | | | | | Light | M & H | | SD | DD |
| 0700-0800 | Pro | 2.1 | 21.4 | 42.8 | 2.9 | 11.4 | 10.0 | 2.1 | 6.4 | 0.9 | 0.0 |
| | Ocp | 1.0 | 1.5 | 2.2 | 8.0 | 6.8 | 1.8 | 1.0 | 11.1 | 15.4 | 0.0 |
| 0800-0900 | Pro | 2.2 | 43.3 | 30.1 | 2.2 | 10.0 | 7.2 | 2.2 | 2.2 | 0.5 | 0.2 |
| | Ocp | 1.3 | 1.5 | 1.7 | 7.1 | 11.3 | 1.7 | 2.4 | 14.4 | 14.0 | 2.5 |
| 0900-1000 | Pro | 1.5 | 29.2 | 39.2 | 0.0 | 7.3 | 18.4 | 2.3 | 1.5 | 0.5 | 0.1 |
| | Ocp | 1.0 | 1.4 | 1.9 | 0.0 | 9.4 | 1.7 | 1.7 | 7.8 | 9.4 | 10.0 |
| 1000-1100 | Pro | 3.3 | 23.7 | 39.8 | 1.7 | 4.3 | 23.4 | 1.3 | 2.0 | 0.3 | 0.0 |
| | Ocp | 1.2 | 1.6 | 1.9 | 1.6 | 7.9 | 1.5 | 1.8 | 1.7 | 6.3 | 0.0 |
| 1100-1200 | Pro | 2.9 | 26.9 | 39.3 | 0.0 | 5.5 | 19.6 | 3.3 | 2.2 | 0.4 | 0.0 |
| | Ocp | 1.0 | 1.5 | 2.0 | 0.0 | 5.5 | 1.6 | 1.7 | 5.5 | 10.8 | 0.0 |
| 1200-1300 | Pro | 2.1 | 29.5 | 42.6 | 1.2 | 4.9 | 17.0 | 1.2 | 1.2 | 0.3 | 0.0 |
| | Ocp | 1.0 | 1.5 | 1.9 | 2.3 | 6.6 | 1.6 | 1.3 | 12.0 | 8.5 | 0.0 |
| 1300-1400 | Pro | 4.1 | 30.3 | 34.7 | 0.7 | 7.4 | 17.0 | 2.6 | 3.0 | 0.4 | 0.0 |
| | Ocp | 1.1 | 1.6 | 2.1 | 4.5 | 11.2 | 1.7 | 1.4 | 7.9 | 14.5 | 0.0 |
| 1400-1500 | Pro | 3.5 | 27.5 | 40.8 | 1.3 | 5.1 | 18.0 | 1.6 | 1.9 | 0.4 | 0.1 |
| | Ocp | 1.0 | 1.6 | 1.9 | 2.0 | 11.2 | 1.3 | 1.0 | 3.3 | 11.6 | 6.0 |
| 1500-1600 | Pro | 3.6 | 32.8 | 35.2 | 0.9 | 5.4 | 19.2 | 0.3 | 2.1 | 0.4 | 0.1 |
| | Ocp | 1.0 | 1.4 | 2.0 | 5.7 | 10.4 | 1.6 | 1.0 | 7.4 | 9.2 | 10.0 |
| 1600-1700 | Pro | 3.0 | 38.1 | 30.9 | 0.9 | 6.1 | 16.6 | 1.8 | 2.1 | 0.4 | 0.1 |
| | Ocp | 1.2 | 1.5 | 2.2 | 3.3 | 13.5 | 1.6 | 1.5 | 3.1 | 12.8 | 13.0 |
| 1700-1800 | Pro | 5.0 | 43.6 | 25.6 | 1.0 | 8.7 | 12.6 | 1.0 | 2.0 | 0.4 | 0.1 |
| | Ocp | 1.1 | 1.6 | 2.3 | 2.7 | 12.3 | 1.7 | 1.0 | 3.3 | 13.8 | 7.0 |
| 1800-1900 Peak hour | Pro | 8.4 | 41.8 | 26.6 | 0.6 | 10.7 | 8.8 | 0.3 | 2.3 | 0.4 | 0.1 |
| | Ocp | 1.1 | 1.7 | 2.2 | 4.0 | 15.2 | 1.7 | 2.0 | 6.9 | 13.0 | 10.0 |
| 1900-2000 | Pro | 6.6 | 41.3 | 29.4 | 0.0 | 12.2 | 8.6 | 0.0 | 1.3 | 0.4 | 0.1 |
| | Ocp | 1.3 | 1.6 | 2.1 | 0.0 | 14.9 | 1.6 | 0.0 | 26.8 | 12.8 | 11.0 |
| 2000-2100 | Pro | 4.1 | 47.1 | 33.4 | 0.3 | 8.5 | 4.1 | 0.3 | 1.7 | 0.3 | 0.1 |
| | Ocp | 1.0 | 1.7 | 2.4 | 4.0 | 14.2 | 1.8 | 2.0 | 1.0 | 6.3 | 5.0 |
| 2100-2200 | Pro | 3.8 | 42.2 | 38.0 | 0.0 | 9.9 | 3.8 | 0.0 | 1.9 | 0.4 | 0.0 |
| | Ocp | 1.2 | 1.8 | 2.2 | 0.0 | 11.5 | 1.7 | 0.0 | 16.2 | 5.8 | 0.0 |
| 2200-2300 | Pro | 5.2 | 35.2 | 43.7 | 0.0 | 8.1 | 4.8 | 0.0 | 2.4 | 0.5 | 0.2 |
| | Ocp | 1.3 | 1.9 | 1.9 | 0.0 | 13.1 | 1.5 | 0.0 | 20.6 | 6.8 | 3.0 |
| 16 hours | Pro | 3.9 | 35.1 | 35.3 | 0.8 | 7.7 | 13.4 | 1.3 | 2.1 | 0.4 | 0.1 |
| | Ocp | 1.1 | 1.6 | 2.0 | 4.3 | 11.6 | 1.6 | 1.6 | 8.8 | 10.9 | 6.9 |

Legend

- Pro.** Proportion of vehicles in % (Sum may not add up to 100% due to figure rounding)
- Ocp.** Average occupancy of vehicles
- M&H** Medium and Heavy